

MANDATORY SERVICE LETTER

SL-200C/400C-0002

TO: ALL OWNERS / OPERATORS OF AFFECTED PROPELLERS
SUBJECT: MANDATORY BLADE FERRULE ROOT MODIFICATION
DATE: FEBRUARY 4, 2003

MODELS AFFECTED: All Whirl Wind 200C Series and 400C Series aerobatic propellers manufactured prior to the date of this letter.

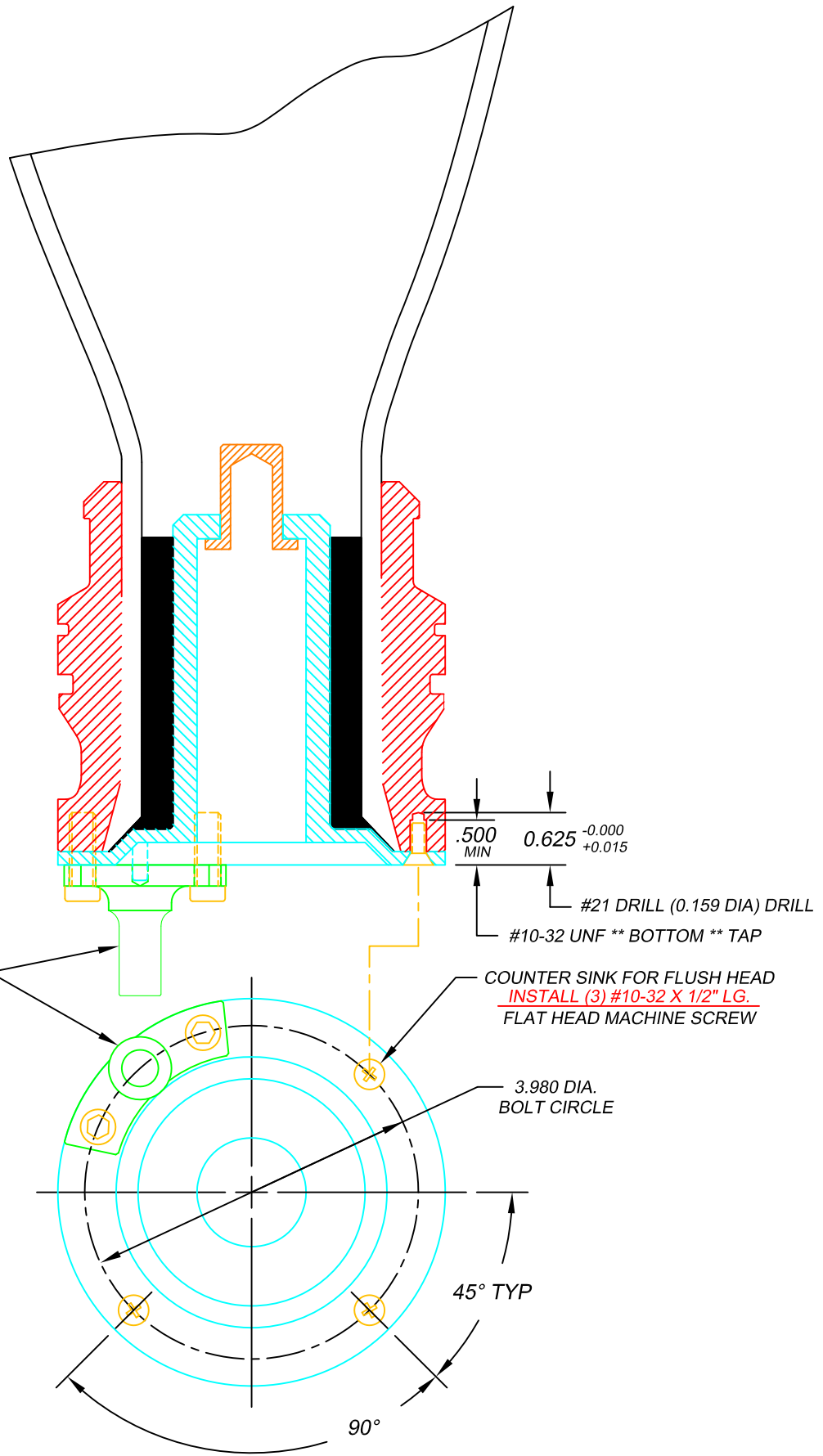
REASON: Blade root inner ferrule may slip resulting in loss of pitch control in affected propeller models.

TIMELINE: This modification must be performed in the next 25 hours or 6 months, whichever occurs first.

DESCRIPTION OF MODIFICATION:

1. A blade ferrule root modification must be performed for all affected propeller models. This modification will require the affected propeller models to be disassembled for the removal of the blades. The blade modification requires three #10 fasteners to be installed at the ferrule root of each blade. After the blade modification is complete, the propeller can then be reassembled and returned to regular service.
2. This modification can be performed by the Whirl Wind Propellers factory. Alternatively, a modification kit will be provided to a qualified propeller service center to perform this modification per Whirl Wind drawing upon approval by Whirl Wind.

P/N: WWA-200-002
 200C 0.50" DIA. PIN BASE
 ** PER SL-200C-051805
 P/N: WWA-400-003
 400C 0.44" DIA. PIN BASE



.500
 MIN
 0.625 ^{-0.000}/_{+0.015}
 #21 DRILL (0.159 DIA) DRILL
 #10-32 UNF ** BOTTOM ** TAP
 COUNTER SINK FOR FLUSH HEAD
INSTALL (3) #10-32 X 1/2" LG.
 FLAT HEAD MACHINE SCREW

3.980 DIA.
 BOLT CIRCLE

45° TYP

90°

200C / 400C SERIES PROPELLER SL-200C-400C-0002 FASTENER INSTRUCTIONS

WHIRL WIND AVIATION

DRAWN BY: J.S.
 REVISION: A

CHECKED BY: B.K. & J.R.
 RELEASE DATE: 01/03/2013